



DIRECTIONS TO THE NET OUTREACH

From North: Rt. 8 South to Butler, left at the last light by Ford Dealership. Right at next light. We are one block down on the left.

From South: Rt. 8 North to Butler, right at the first light by Ford Dealership. Right at next light. We are one block down on the left.

From East & West: Rt. 68 to Rt. 8 South (Main Street Butler), Left at the last light by Ford Dealership. Right at next light. We are one block down on the left.



DAD

Butler County
Dad's
Club



Butler County Dad's Club

Who Are We?

Purpose

The purpose of the Butler County Dad's Club is to provide men in fatherhood roles the opportunity to develop additional skills to help them become the best fathers that they can be. It also provides men the opportunity to meet and fellowship with other fathers throughout Butler County.

Who are we looking for?

We are looking for any man that is willing to meet for six weeks to focus on their role as a father in the life of a child. This includes biological fathers, step-fathers, grandfathers, adoptive fathers, non-custodial fathers, or any other man at any age that is functioning in a fatherhood role.

What will we do?

Each week we will strive to learn more about ourselves and our role in the success of our children and families.

Topical Program Content includes:

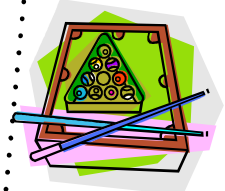
- In Depth Personality Profile
- Personality and Interpersonal Relationships
- Understanding Thought and Decision Making
- Setting Goals Toward Success
- Communication and Conflict Resolution
- Application and Discussion

Information and referral to other Butler County Agencies will also be available for additional help and referral.



Refreshments
and
Recreation

Free!



Meetings are held

@

The Net Outreach

**100 Center Avenue
Butler, PA 16001**

For information and/or to register
contact: Bill Halle @ 724-282-0507

For directions to The Net Outreach
Visit www.gyff.org

The Butler County Dad's Club is a cooperative
program of Grace Youth and Family Foundation
and the Butler Collaborative for Families.